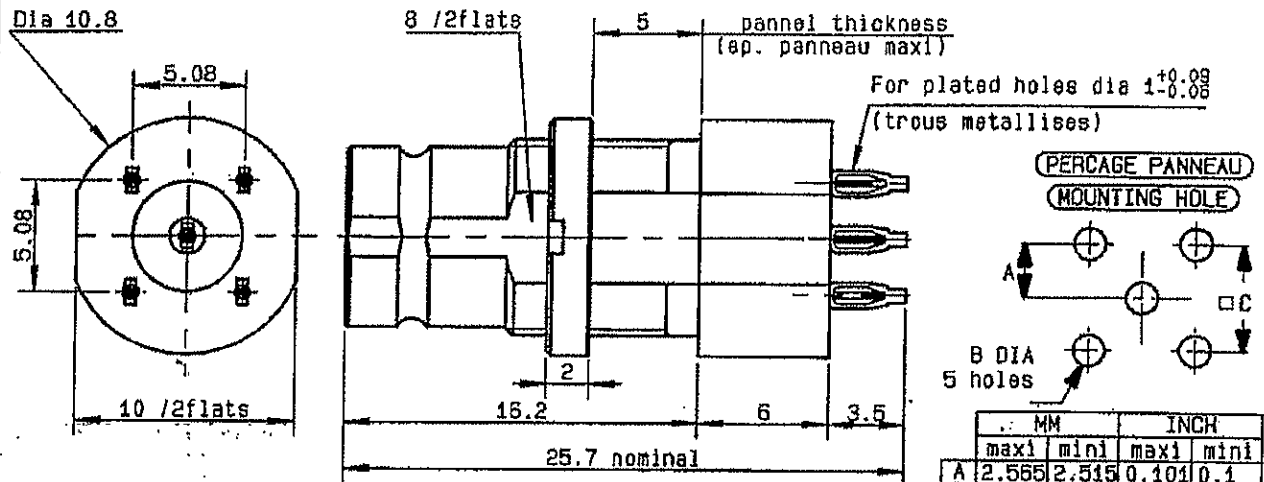


STRAIGHT BULKHEAD RECEPTACLE FOR P.C.B WITH PRESS-FIT TERMINATION

R129.574.030
SERIES V1.6-5.6



NOMINAL IMPEDANCE	75	Ω
FREQUENCY RANGE	0-8	GHz
TEMPERATURE RATING	-40/+85	'C
V.S.W.R	NA +	x F(GHz)Maxi
RF INSERTION LOSS	NA	\sqrt{F} (GHz) dB Maxi
VOLTAGE RATING	330	Veff Maxi
DIELECTRIC WITHSTANDING VOLTAGE	1000	Veff Mini
INSULATION RESISTANCE	1000	M Ω Mini
HERMETIC SEAL	NA	Atm.cm ³ /s
LEAKAGE (pressurized only)	NA	
MECHANICAL DURABILITY	1000	Cycles
WEIGHT	7.7	gr

CABLES :

OTHERS CHARACTERISTICS

COMPLIANT PIN/BODY RETENTION: 80 N mini

CABLE RETENTION	NA	N Mini
CENTER CONTACT RETENTION		
Axial force - mating end	30	N Mini
Axial force - opposite end	30	N Mini
Torque	NA	cm.N Mini
RECOMMENDED TORQUES		
Mating		cm.N
Panel nut	250	cm.N
Clamp nut		cm.N

CONNECTOR PARTS	MATERIALS	FINISH
BODY	BRASS	NICKEL + SELECTIVE GOLD
OUTER CONTACT		
CENTER CONTACT	BERYLLIUM COPPER	GOLD 1.3 OVER NICKEL 2
INSULATOR	PTFE	-
GASKET		-
OTHERS PIECES	PHOSPHOR BRONZE	TIN 3 OVER NICKEL 2

(all values are given in micrometers)

ISSUE **0540D** CREATION DATE **29-AUG-95** FILE PART-NUMBER **95-0108-553**



The information given here is subject to change without notice. Design changes may be in order to improve the product.

Connect to the future

BONDINI

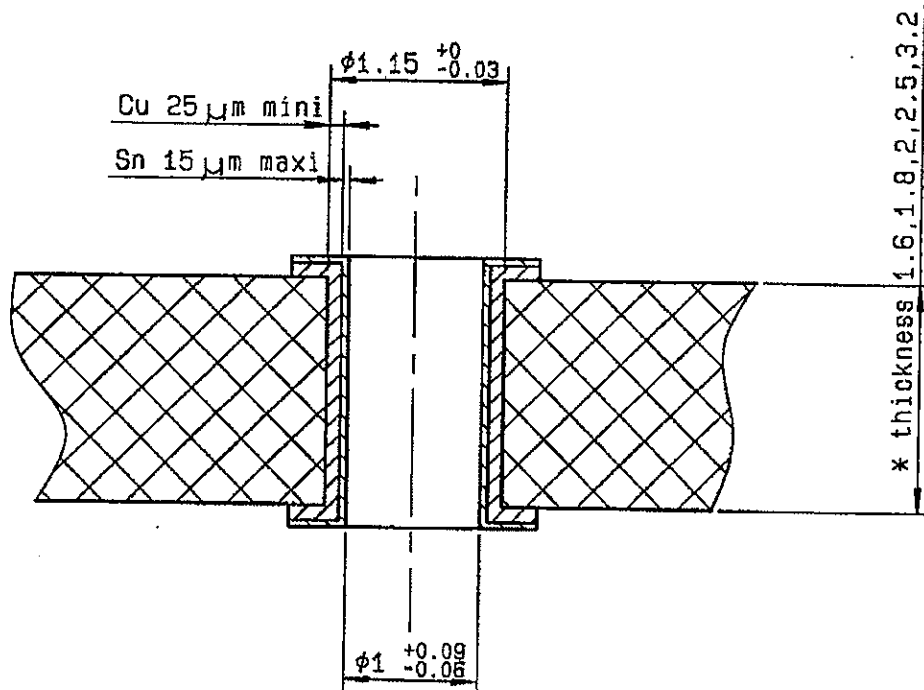


R129.574.030

ISSUE 0540D

SERIES
V1.6-5.6

PC BOARD MATERIAL	GLASS FIBRE EPOXYD NEMA:G10,G11,FR4,FR5 DIN 40802 : EP-GC 01 , EP-GC 02
THICKNESS	1.6 mm *
HOLE	FOR 1mm COMPLIANT PIN
BORE-HOLE	$\phi 1.15 \text{ } 0/-0.03$
COPPER	$> 25 \mu\text{m}$
TIN	$< 15 \mu\text{m}$
FINAL DIAMETER	$\phi 1 \text{ } +0.09/-0.06$





R129.574.030

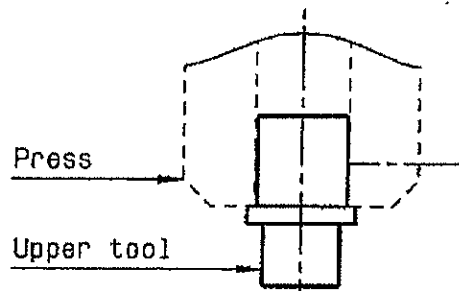
ISSUE 0540D

SERIES
V1.6-5.6

MOUNTING INSTRUCTIONS ON THE PCB
STRAIGHT CONNECTORS WITH PRESS-FIT TERMINATION

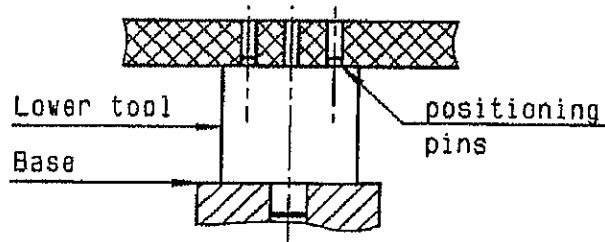
①

Slide the upper tool (R282.878.224) into the machine (press) or yourself tool .

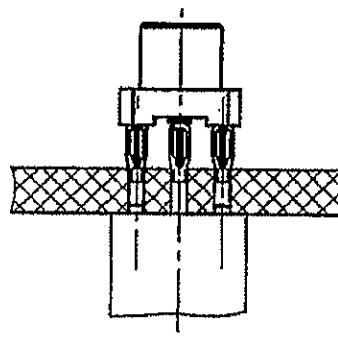


②

Slide the lower tool (R282.878.523) into the base and place correctly the PCB on this tool .(positioning pins)



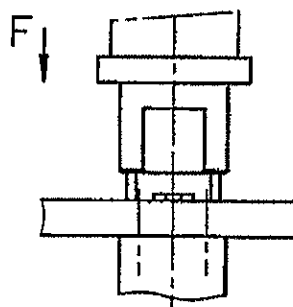
Place correctly the straight connector with press-fit termination on the PCB and introduce the press-fit extremity in the holes of the PCB .



④

Push on the top (about 500 N) until total insertion .(in direction F) (Push connector body until it bottoms against PCB) .

Remove the connector and the PCB assembly .





R129.574.030

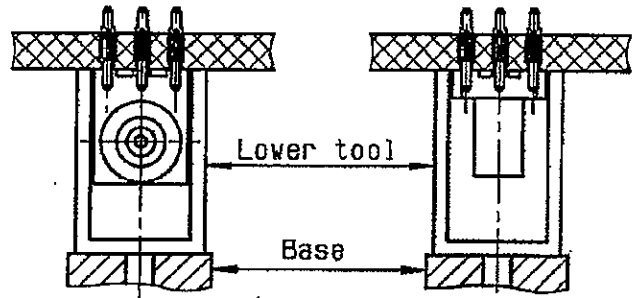
ISSUE 0540D

SERIES
V1.6-5.6

REPLACEMENT INSTRUCTIONS ON THE PCB
STRAIGHT AND RIGHT ANGLE CONNECTORS WITH PRESS-FIT TERMINATION

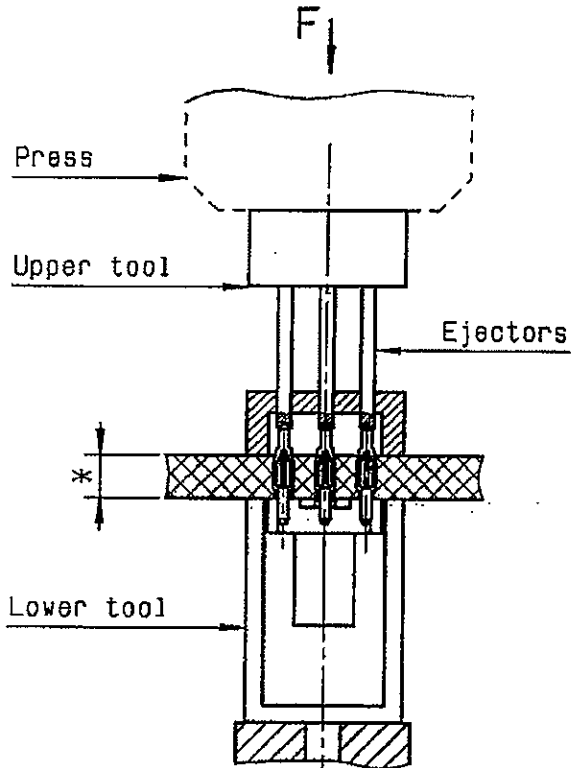
①

Place correctly the PCB and the connector on lower tool (R282.878.534)



②

Place the upper tool (R282.878.513) at the back of the connector and place correctly the ejectors on Press-fit pins .



Press the back of the upper tool to remove the connector (about 500N) into the connector slide down onto lower tool .

④

CAUTION !

It's impossible to use a COAXIPRESS a twice .

A plated hole of the PCB can't be used over 3 times .

* panel thickness: 1.6 to 7 mm